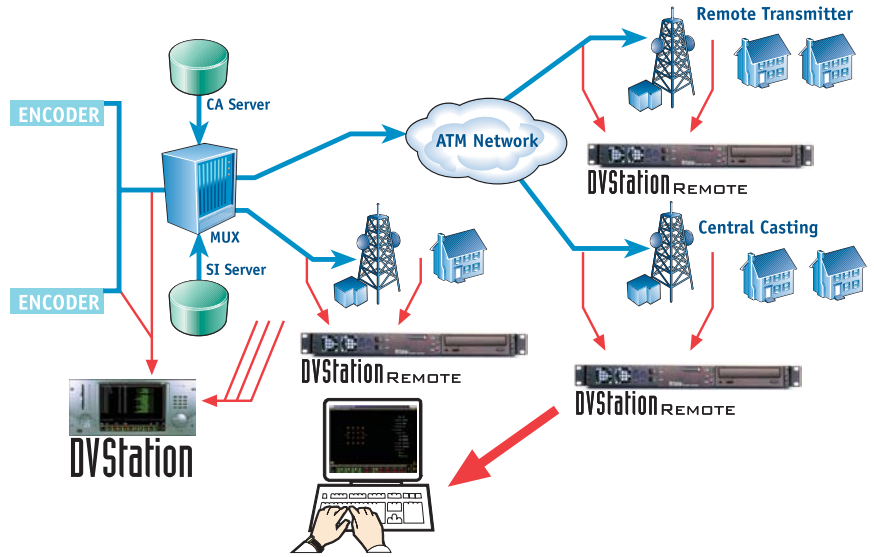


service integrity
signal integrity
remote monitoring

WWW.PIXELMETRIX.COM



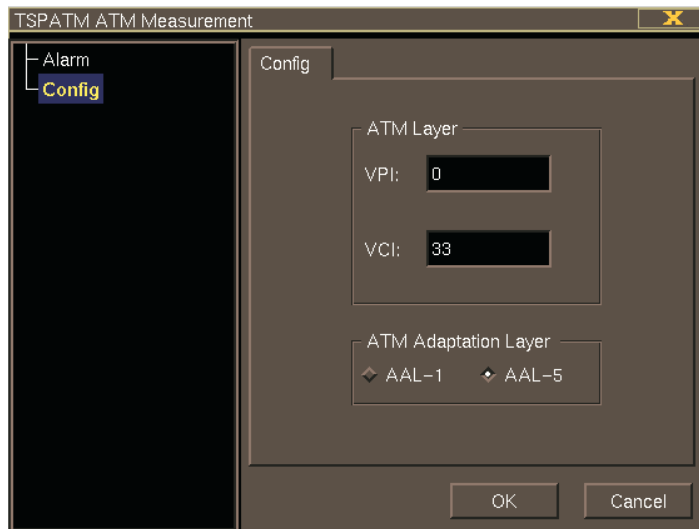
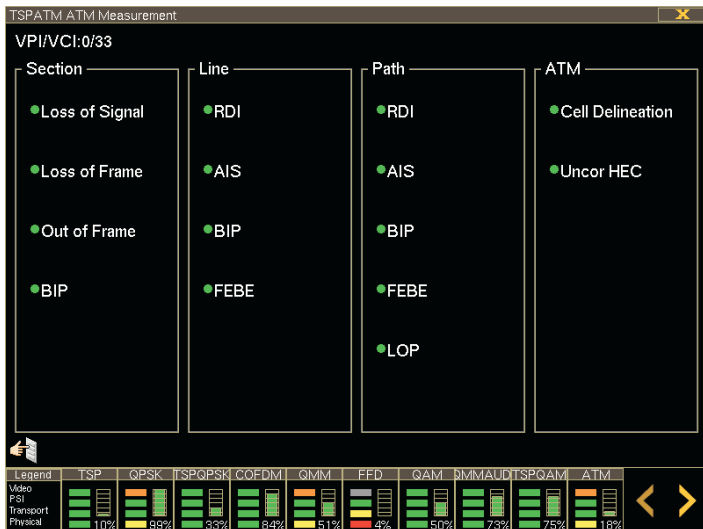
Asynchronous Transfer Mode TSP



-
-
-
-
-

-
-
-
-
-





SPECIFICATIONS

Standards

- ITU-T J.82
- AAL-1 (188 Byte MPEG2-TS)
- AAL-5 (188 Byte MPEG2-TS, N=2)

Optical Input

SC connector

Wavelength Range

1200 nm – 1600 nm

Input Power Level

-36 dBm to 0 dBm

Bit Rate

155.52 Mb/s

Framing

OC-3c (SONET) / STM-1 (SDH)

ATM Adaptation Layer

AAL-1 / AAL-5

Network Interface

UNI 3.1 (PVC)

Pixelmetrix Corporation

The Americas

965 N. Nob Hill Rd. #114
 Ft. Lauderdale, FL 33324
 Tel: 954-472-5445
 Fax: 954-472-6989

Asia Pacific

27 Ubi Road 4
 #05-01 MSL Building
 Singapore 408 618
 Tel: +65 6547 4935
 Fax: +65 6547 4945

Europe

Haldenstrasse 24
 CH 8967 Widen, AG
 Switzerland
 Tel: +41 79742 7454
 Fax: +41 86079 742 7454

www.pixelmetrix.com

Ref: PPN30090
 Copyright © 2003 Pixelmetrix Corporation. All rights reserved.
 DVStation, DVStation-Remote, DVStation-Pod, DVStation-IP, DVStor, DVShift, DVScope, and DPI Auditor are trademarks of Pixelmetrix Corporation.
 Data subject to change without notice.

| Layer | Measurement |
|---------|---|
| Section | Loss of Signal (LOS) Out of Frame (OOF) Loss of Frame (LOF) Bit Interleave Parity (BIP) |
| Line | Far End Remote Failure (FERF) Alarm Indication Signal (AIS) Bit Interleave Parity (BIP) Far End Block Error (FEBE) |
| Path | Remote Defect Indication (RDI) Alarm Indication Signal (AIS) Bit Interleave Parity (BIP) Loss of Pointer (LOP) |
| ATM | Cell Delineation Un-correctable Header Error Control (HEC) |

Distributor Contact

