

SPECIFICATIONS

Mechanical & Electrical Characteristics (1U Rack Mount PC)

- 90 - 250 Vac, 47 - 63 Hz autodetect, 300W Max
- Operating temperature: +5°C to +35°C
- Storage temperature: -20°C to +50°C

Mechanical & Electrical Characteristics (Rugged Luggable PC)

- 90 - 250 Vac, 47 - 63 Hz autodetect, 400W Max
- Operating temperature: +5°C to +35°C
- Storage temperature: -20°C to +50°C

Analog Sync Input

- Switchable 75Ω BNC connector
- 20 dB input return loss up to 30 MHz
- Black signal with bi-level sync (0.3V pk-pk) or tri-level sync (0.6V pk-pk)

Serial Digital Input

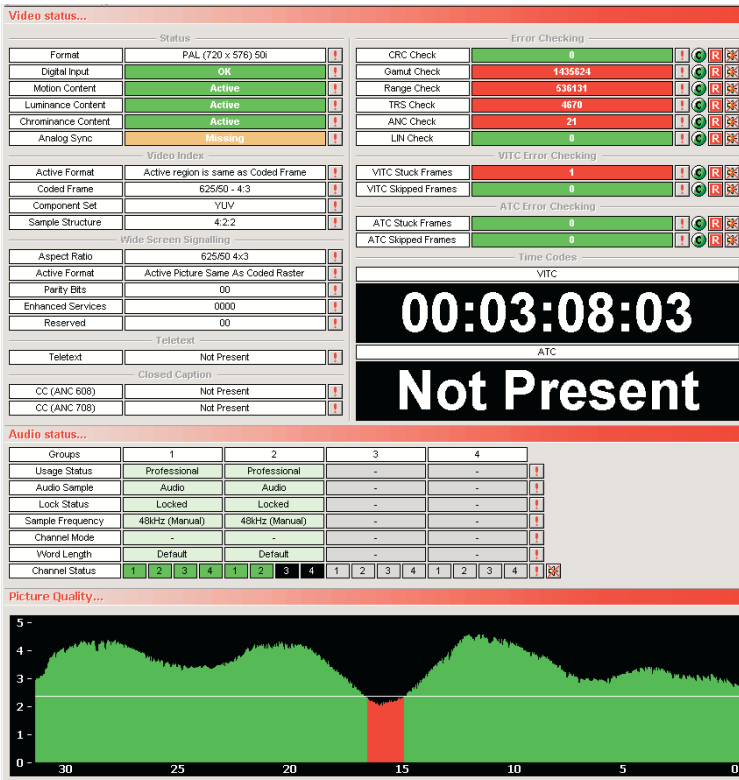
- 75Ω BNC connector
- 15 dB input return loss up to 1.5 GHz
- 270 Mbps, 540 Mbps, 1.485 Gbps bit rate (SMPTE 259M, 344M, 292M)

Serial Digital Output

- 75Ω BNC (2x) connector
- 270 Mbps, 540 Mbps, 1.485 Gbps bit rate (SMPTE 259M, 344M, 292M)
- 0.2UI maximum, 10 Hz to 100 kHz transmit jitter

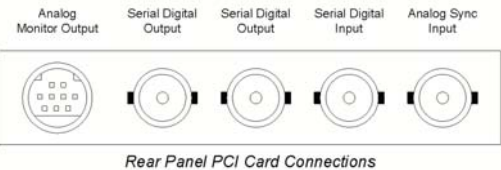
Analog Monitor Output

- 9-pin mini-DIN connector
- RGB with bi- or tri-level sync on green, 0.7V pk-pk video; or
- YprPb with bi- or tri-level sync on Y, 0.7V pk-pk; or
- Composite and S-Video (in PAL or NTSC modes) 0.7 pk-pk video
- H & V separate syncs, TTL level, positive-going pulses



Performance

- Formats
 - 525i / 59.94, 625i / 50 (ITU-R BT601)
 - 525p / 59.94, 625p / 50 (ITU-R BT1385)
 - 720p / 23.98, 24, 25, 29.97, 30, 50, 59.94, 60 Hz (SMPTE 296M)
 - 1035i / 59.94, 60 Hz (SMPTE 260M)
 - 1080sF / 23.98, 24 Hz (SMPTE 274M, RP211)
 - 1080i / 50, 59.94, 60 Hz (SMPTE 274M)
 - 1080p / 23.98, 24, 25, 29.97, 30 Hz (SMPTE 274M)
- Resolution: 10 bpp
- Audio: 8 channels embedded audio output, 48 kHz, 20-bit or 24-bit
- Error control: EDH output in SDTV modes; Line CRCs in HDTV
- Motion Store (with Motion option)
 - 525-line: 1023 frames, 34 sec/ 60i
 - 625-line: 970 frames, 39 sec/ 50i
 - 720p modes: 436 frames, 18 sec/ 24p, 9 sec/ 50p, 7 sec/ 60p
 - 1080 modes: 194 frames, 8.1 sec/ 24sF, 7.8 sec/ 50i, 6.5 sec/ 60i
- Power-up: Time from power-up to serial video output valid 1 sec Max
- Genlock: Output timing adjustable (with respect to sync input) in clock increments from 0 to 1 video frame



Pixelmetrix Corporation

The Americas

965 N. Nob Hill Rd. #114
 Ft. Lauderdale, FL 33324
 Tel: 954-472-5445
 Fax: 954-472-6989

Asia Pacific

27 Ubi Road 4
 #05-01 MSL Building
 Singapore 408 618
 Tel: +65 6547 4935
 Fax: +65 6547 4945

Europe

Haldenstrasse 24
 CH 8967 Widen, AG
 Switzerland
 Tel: +41 79742 7454
 Fax: +41 86079 742 7454

www.pixelmetrix.com

Ref: PPN30089
 Copyright © 2003 Pixelmetrix Corporation. All rights reserved.
 DVStation, DVStation-Remote, DVStation-Pod, DVStation-IP, DVStor, DVShift, DV Sentry, DVScope, and DPI Auditor are trademarks of Pixelmetrix Corporation. Data subject to change without notice.

Distributor Contact

