

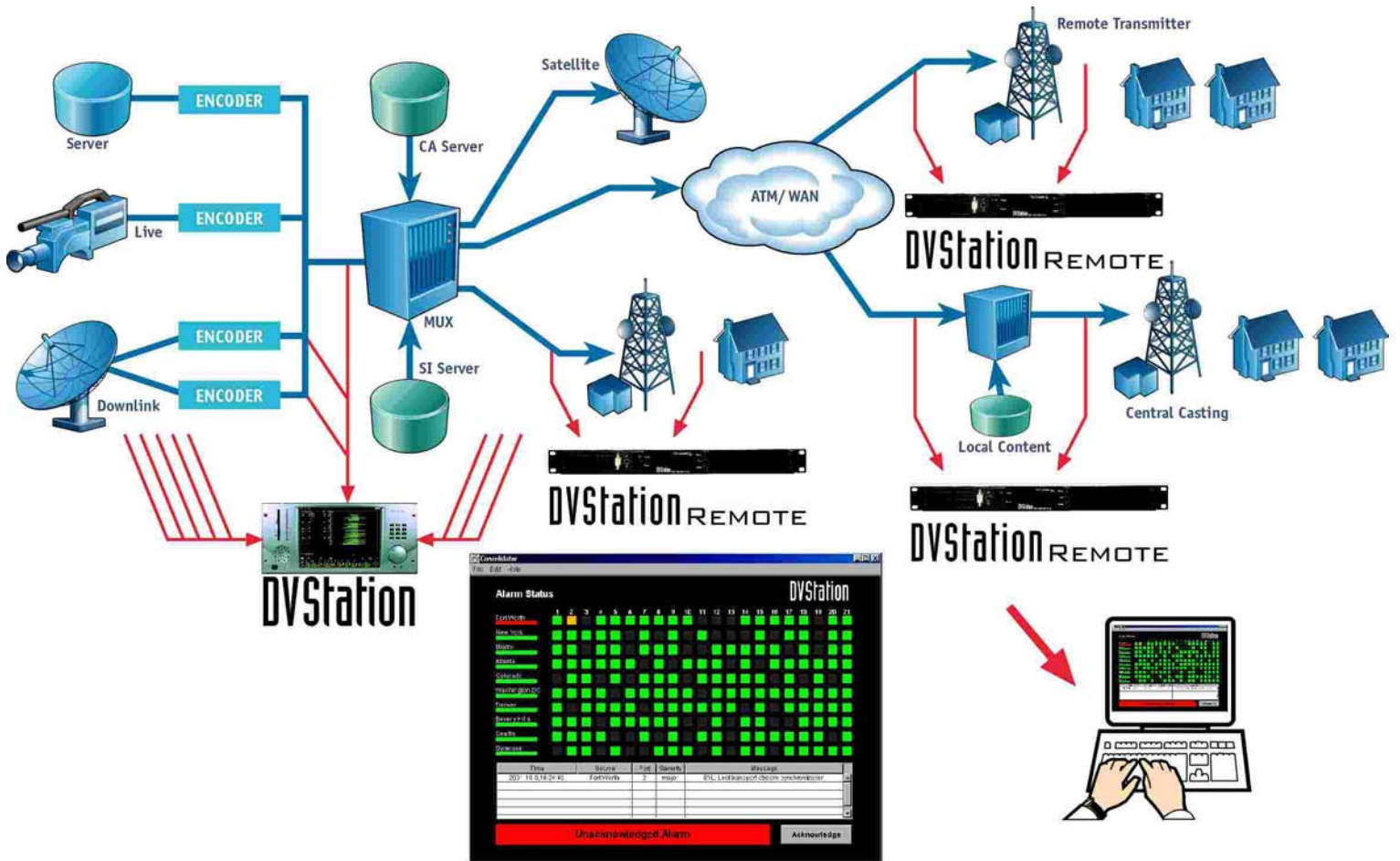
service integrity
 signal integrity
 remote monitoring

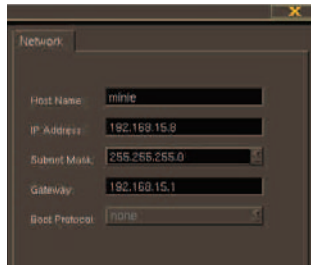
www.pixelmetrix.com

CONSOLIDATOR

REMOTE PREVENTATIVE MONITORING

Consolidate Performance and Fault Information from Multiple Sites to a Single Location.





SPECIFICATIONS

Agent Support

Connects and reports fault information from DVStation 21-port mainframe and DVStation-Remote 4-port mainframe.

Network Interface

- 100BaseT Ethernet Interface
- Dial up Modem (requires configuration)

Network Management Interface

- SNMP Protocol version 1 or 2
- TCP/IP Protocol Stack
- TRAP on ETR-290 alarm

System Requirements

- Supports MS Windows 95, 98 and 2000
- Minimum 56 kb/s network connection
- Minimum 64 MB RAM

REMOTE ACCESS SPECIFICATIONS

General

- Internet Explorer 5.0 or higher
- Netscape 4.6 or higher

Java Application

- Microsoft Windows 95, 98 and 2000
- Minimum 200 kb/s network connection
- Minimum 128 MB RAM

Remote X Window Application

- Microsoft Windows 95, 98 and 2000, Mac OS, Unix, Linux
- X server with low bandwidth x capability
- Minimum 100 kb/s network connection

Pixelmetrix Corporation

The Americas

965 N. Nob Hill Rd. #114
Ft. Lauderdale, FL 33324
Tel: 954-472-5445
Fax: 954-472-6989

Asia Pacific

27 Ubi Road 4
#05-01 MSL Building
Singapore 408 618
Tel: +65 6547 4935
Fax: +65 6547 4945

Europe

Haldenstrasse 24
CH 8967 Widen, AG
Switzerland
Tel: +41 79742 7454
Fax: +41 86079 742 7454

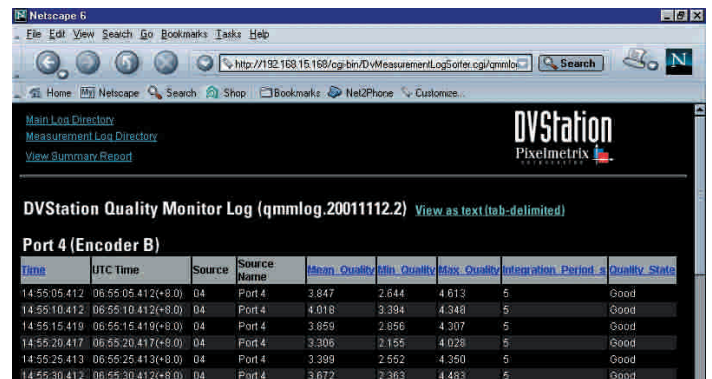
www.pixelmetrix.com

Ref: PPN30042

Copyright © 2003 Pixelmetrix Corporation. All rights reserved.

This product includes software developed by LangBox International (<http://www.langbox.com/>)

DVStation, DVStation-Pod, DVStation-Remote, DVStation-IP, DVShift and DVStor are trademarks of Pixelmetrix Corporation. Data subject to change without notice.



Distributor Contact

